



Violla

Lupine Plan

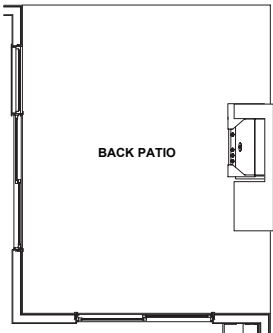
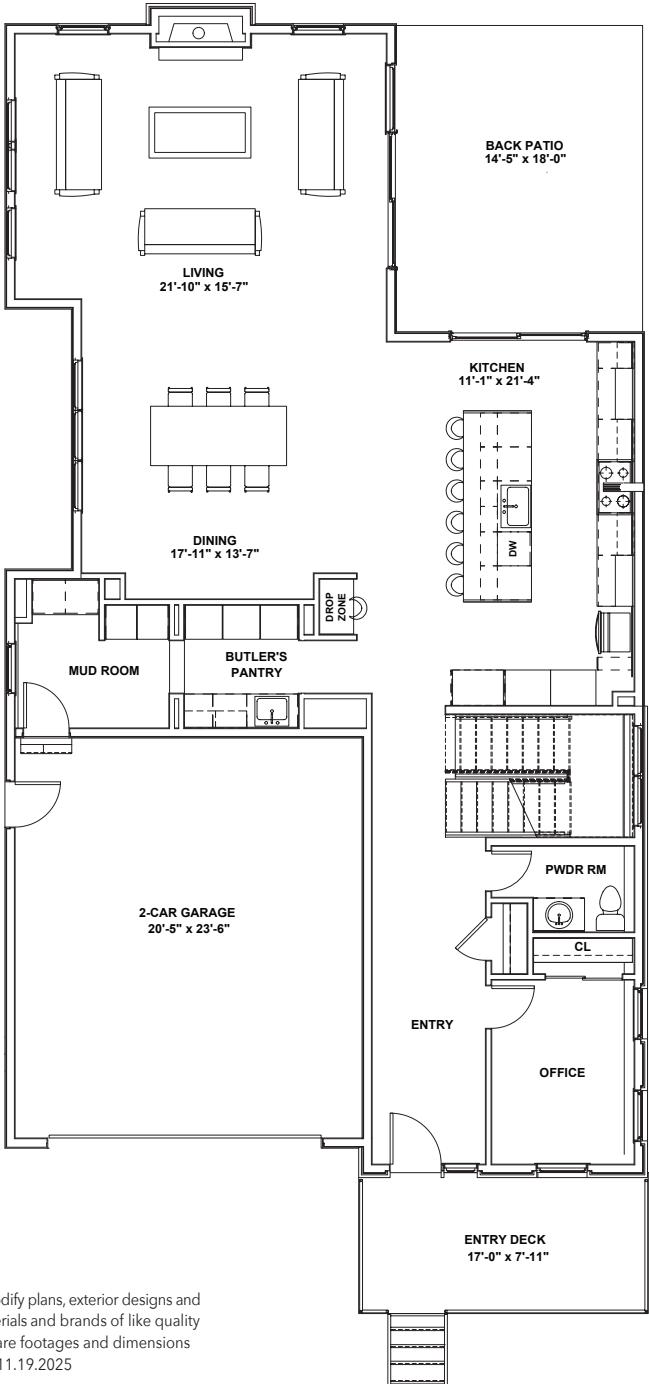


Approximate Size:
2,847 Above Ground; 4,131 Finished
Square footages are lot specific with slight variations.

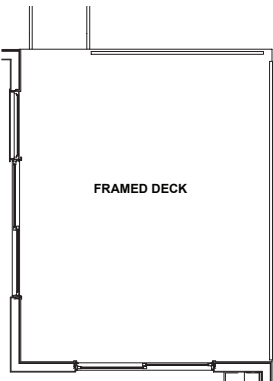
Lupine Plan



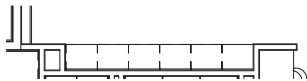
First Floor



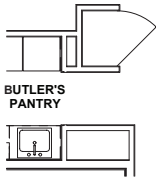
Outdoor Kitchen Option



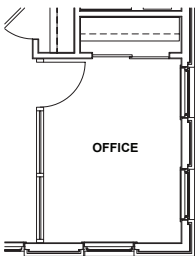
Framed Deck Force Option
Locust Ave.



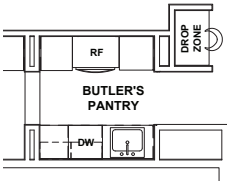
Dining Buffet Option



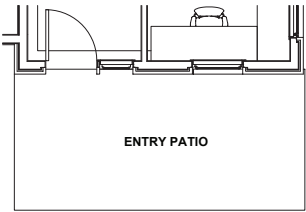
Wine Room Option



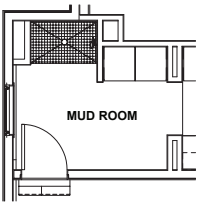
Office Storefront Option



Butler's Pantry Option



Entry Patio Forced Option
Locust Ave.



Dog Wash Option

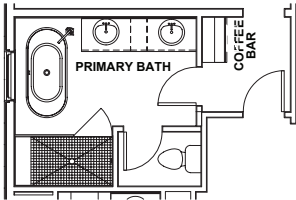
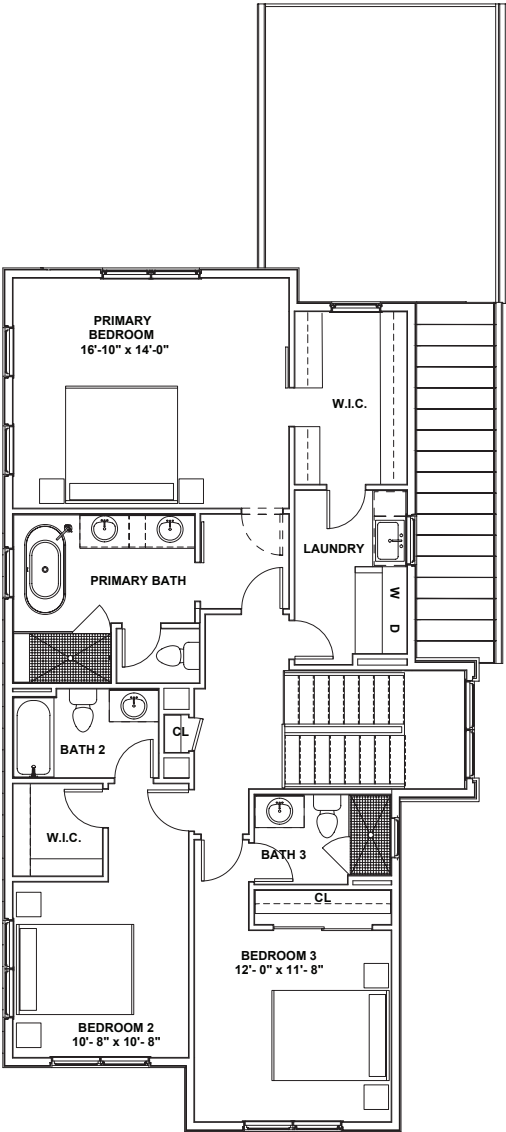


KC Union, LLC reserves the right to modify plans, exterior designs and specifications and may substitute materials and brands of like quality at any time without prior notice. Square footages and dimensions provided are approximate. Effective 11.19.2025

Lupine Plan



Second Floor

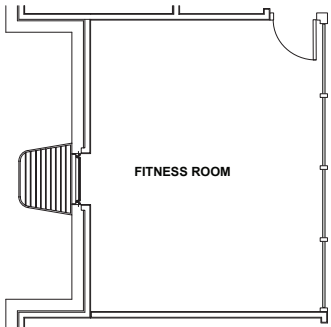
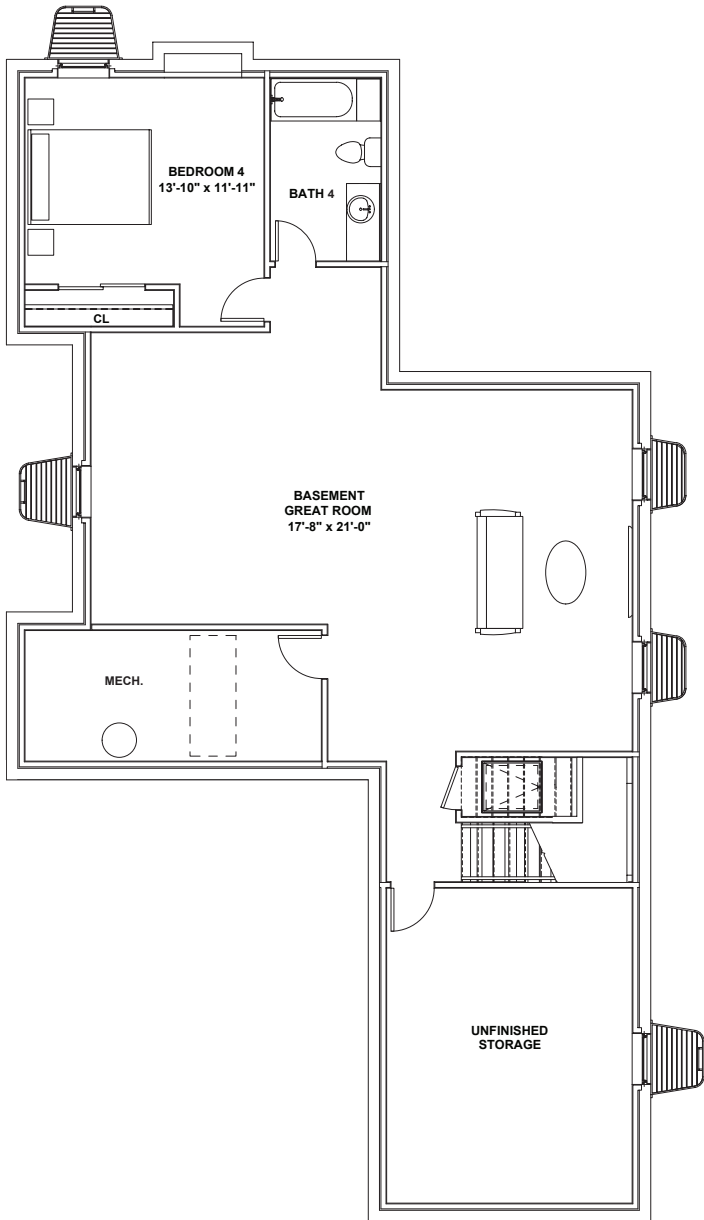


Coffee Bar Option

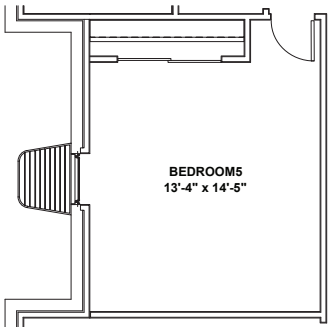
Lupine Plan



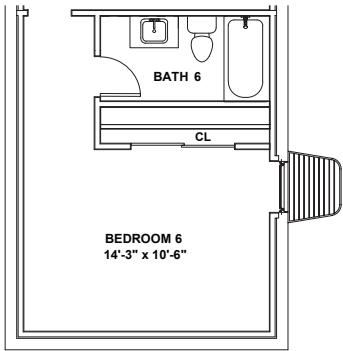
Lower Level



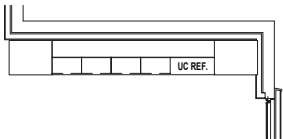
Fitness Room Option



Bedroom 5 Option



Bedroom 6 & Bath Option



Casework Option