



VINE



Plan B

Nestled in three buildings along Vine Street, this plan occurs four times and sports two bedrooms and two and a half baths on the main and upper levels. A third-floor open-air deck gives you views of the neighborhood, plus a sunny loft area or extra bedroom suite. The unfinished basement

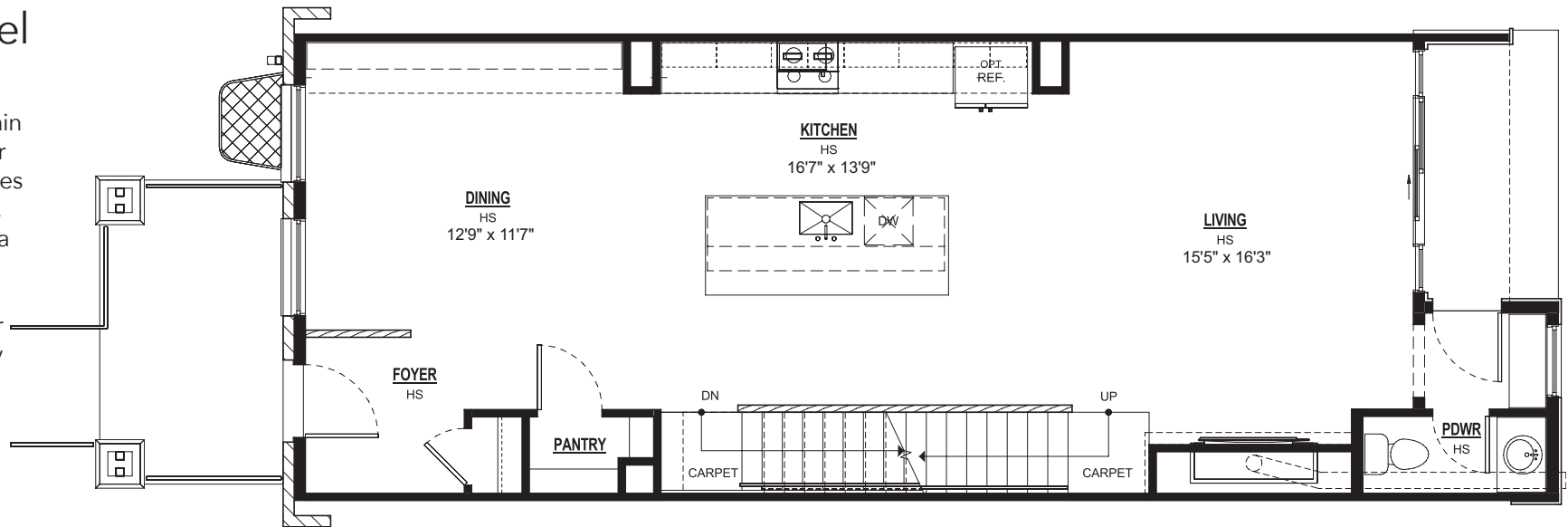
can also house an additional bedroom suite, along with a family rec room. A private outdoor living area connects the main residence to a detached two-car garage along the back alley.

Plan B: 2,343 Total Square Feet + 726 Square Feet in Optional Finished Basement



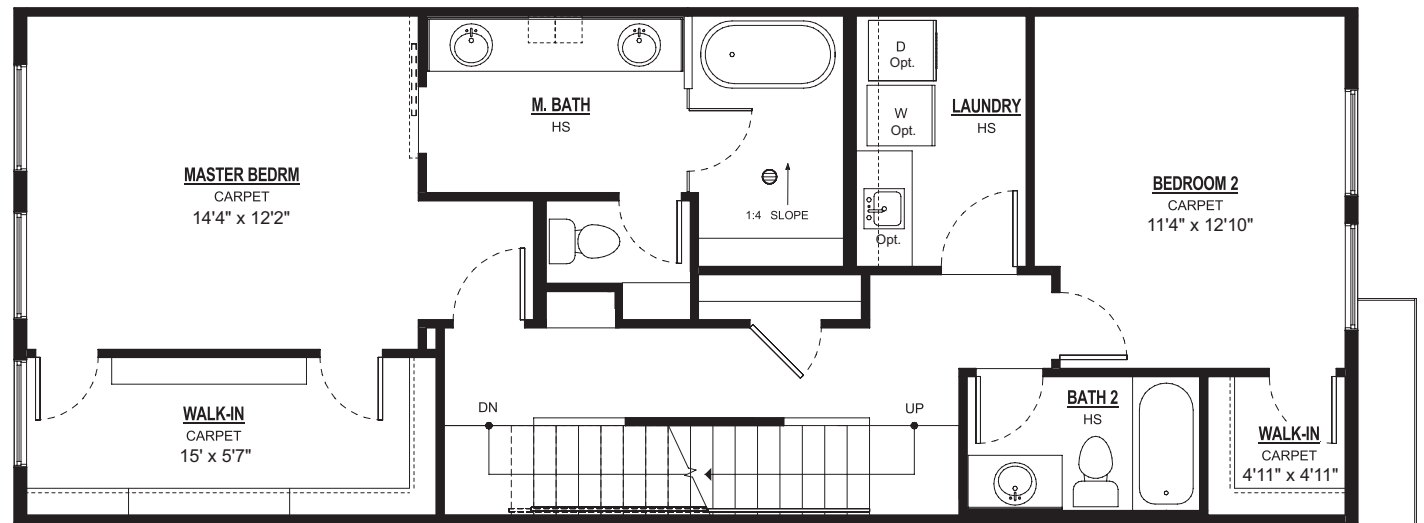
Main Level 953 SF

The spacious main level's open floor plan encompasses the dining room, living room and a spacious kitchen with an ample island. A powder room and pantry complete the picture.



Second Level 975 SF

On the second level, two bedrooms boast walk-in closets and large windows for an abundance of natural light. The laundry room is conveniently located on this floor.

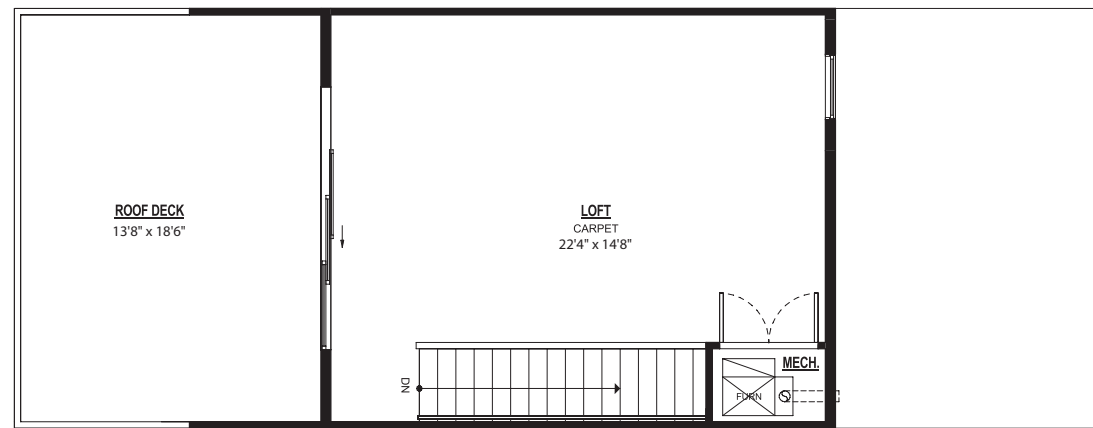


Plan B: 2,343 Total Square Feet + 726 Square Feet in Optional Finished Basement



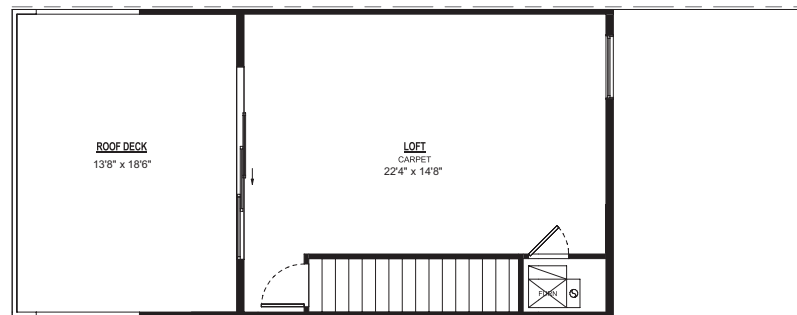
Third Level 415 SF

Upstairs, you'll find a rooftop deck overlooking the neighborhood, plus a loft or the option of an additional bedroom suite.



Third Level Option 1 415 SF

Enclosed Stairwell

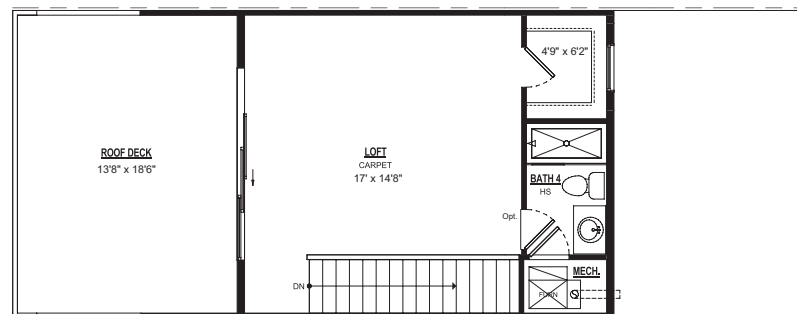


Reduced size; not to scale

Third Level Option 2 415 SF

Loft with Bath and Closet

For bedroom suite, select Options 1 and 2



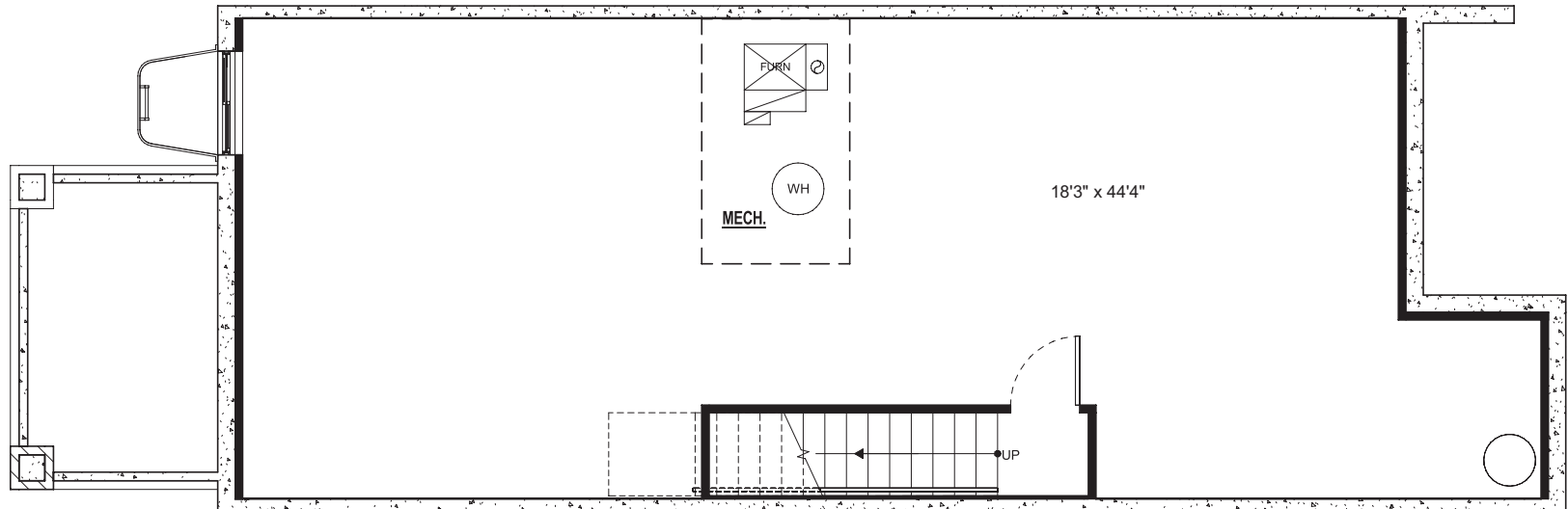
Reduced size; not to scale

Plan B: 2,343 Total Square Feet + 726 Square Feet in Optional Finished Basement



Standard Unfinished Basement 879 SF

The unfinished basement is perfectly sized for a family rec room. You can also tuck in another bedroom suite here (see below).



Finished Basement Option 726 SF

