



VINE



Plan A

These four smart-sized rowhomes are sprinkled throughout Vine. Each home starts with two bedrooms and two and half baths. The third-floor loft and/or basement can be configured into additional bedroom suites.

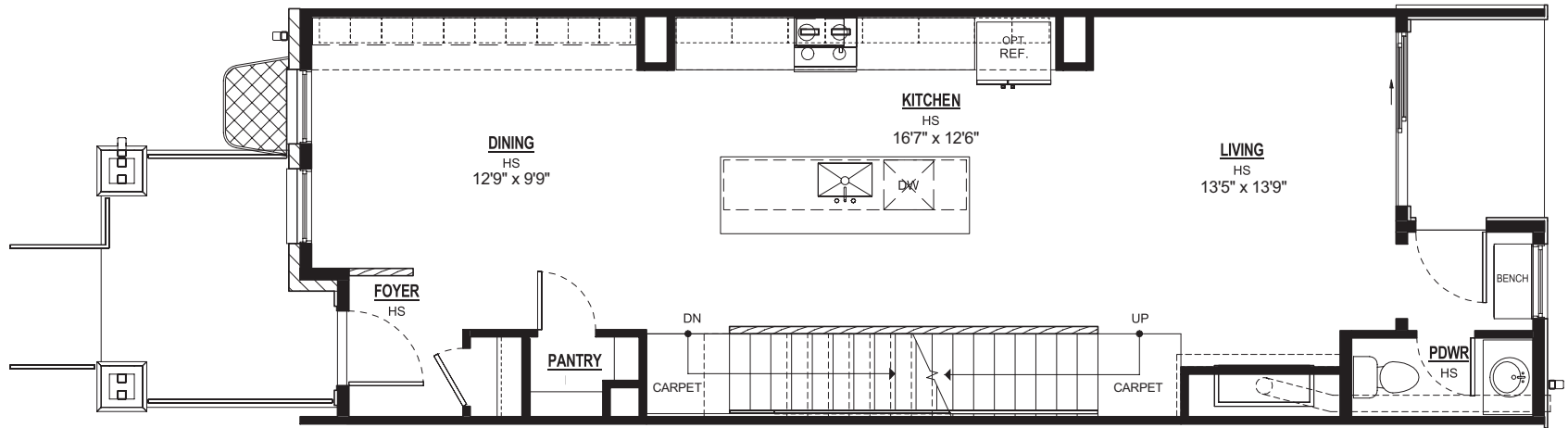
Like all Vine homes, these span four floors, including a walk-out treetop deck. Private outdoor space links the house with an oversized one-car detached garage fed by the back alley.

Plan A: 1,993 Total Square Feet + 610 Square Feet in Optional Finished Basement



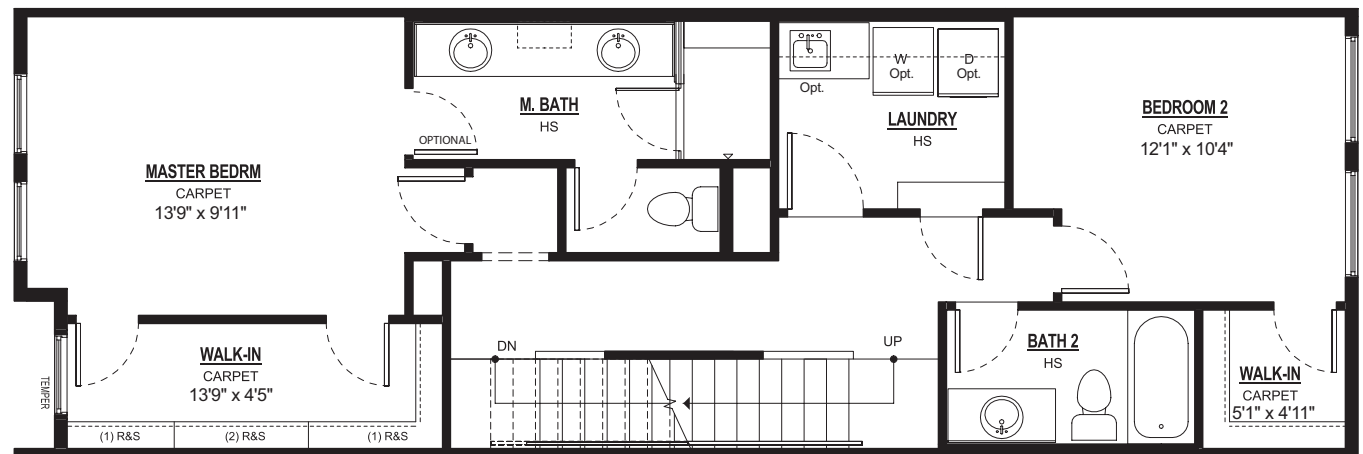
Main Level 793 SF

The main level centers around an impressive kitchen with a signature island, and free-flowing living and dining areas. A convenient powder room is just off the living space.



Second Level 840 SF

Two bedrooms with roomy walk-in closets, each with a full bath, are on the second floor, along with a centrally located laundry room.



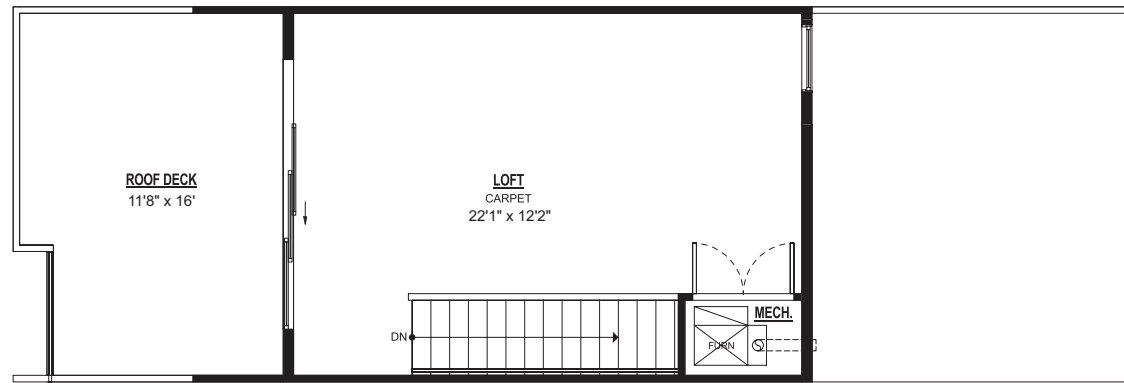
Plan A: 1,993 Total Square Feet + 610 Square Feet in Optional Finished Basement



Third Level 360 SF

Step up to the top floor and into a loft, which can be constructed as a bedroom suite.

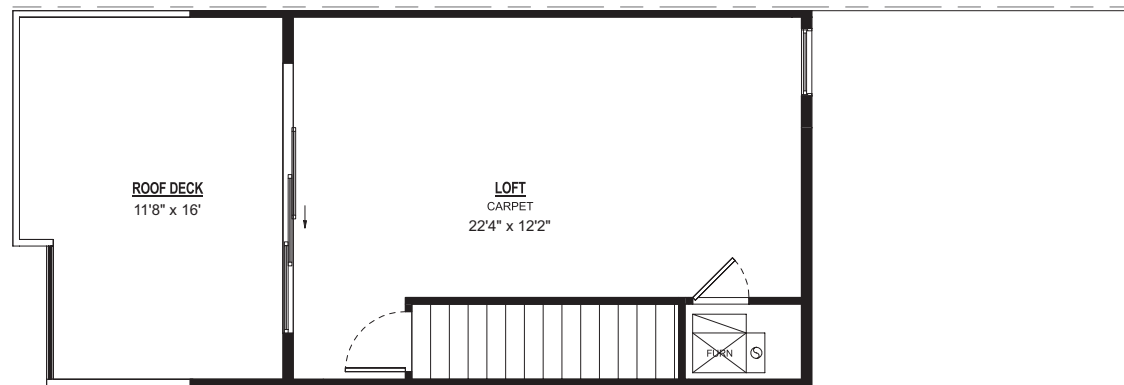
The space opens onto a private treetop deck for entertaining, daydreaming or sipping a latte.



Reduced size; not to scale

Third Level Option 1 360 SF

Enclosed Stairwell

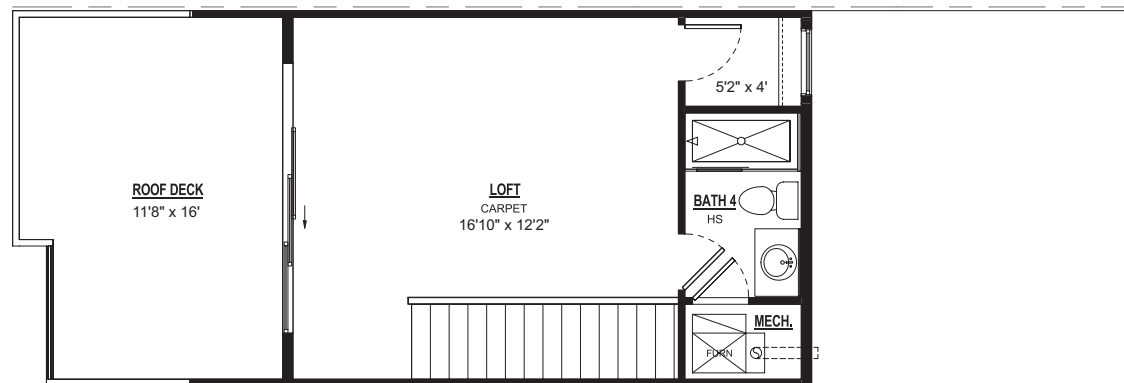


Reduced size; not to scale

Third Level Option 2 360 SF

Loft with Bath and Closet

For bedroom suite, select Options 1 and 2



Reduced size; not to scale

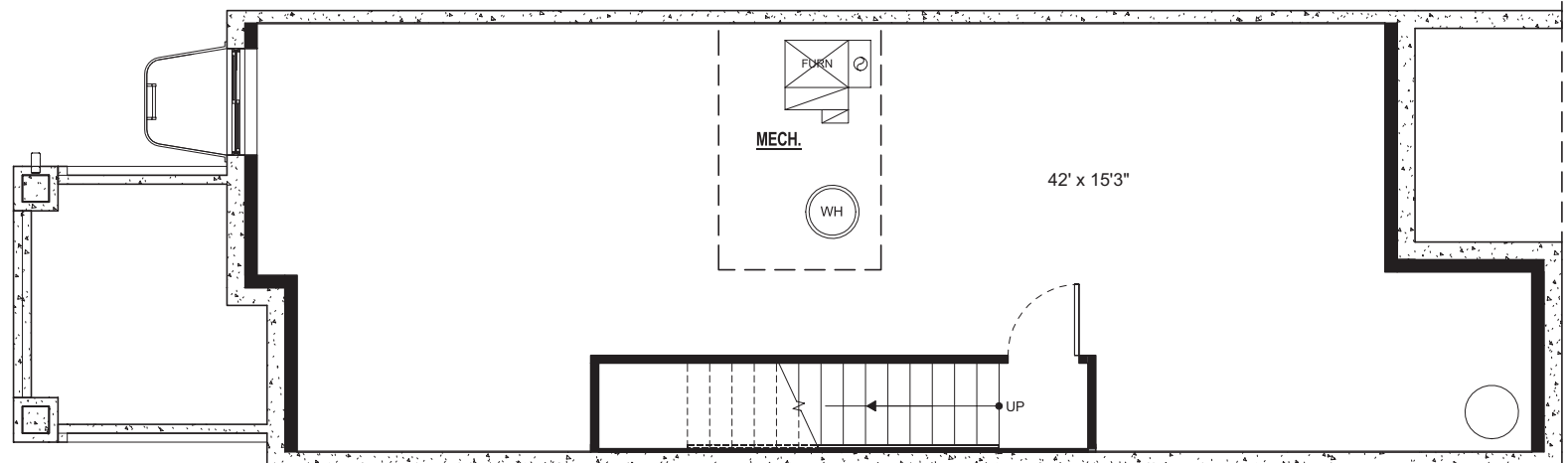
KUH Vine Street, LLC reserves the right to modify plans, exterior designs and specifications and may substitute materials and brands of like quality at any time without prior notice. Square footages and room dimensions provided are approximate. Effective 7.2018

Plan A: 1,993 Total Square Feet + 610 Square Feet in Optional Finished Basement



Standard Unfinished Basement 725 SF

Look to the unfinished basement for a family rec room, with space for an additional bedroom suite (see below).



Finished Basement Option 610 SF

