



VINE



Plan C

Six C Plans bookend each of Vine's three buildings. All span four floors - from basement to treetop deck. Spacious floor plans accommodate three bedrooms and two and a half baths on the main and upper floors. You can easily add two

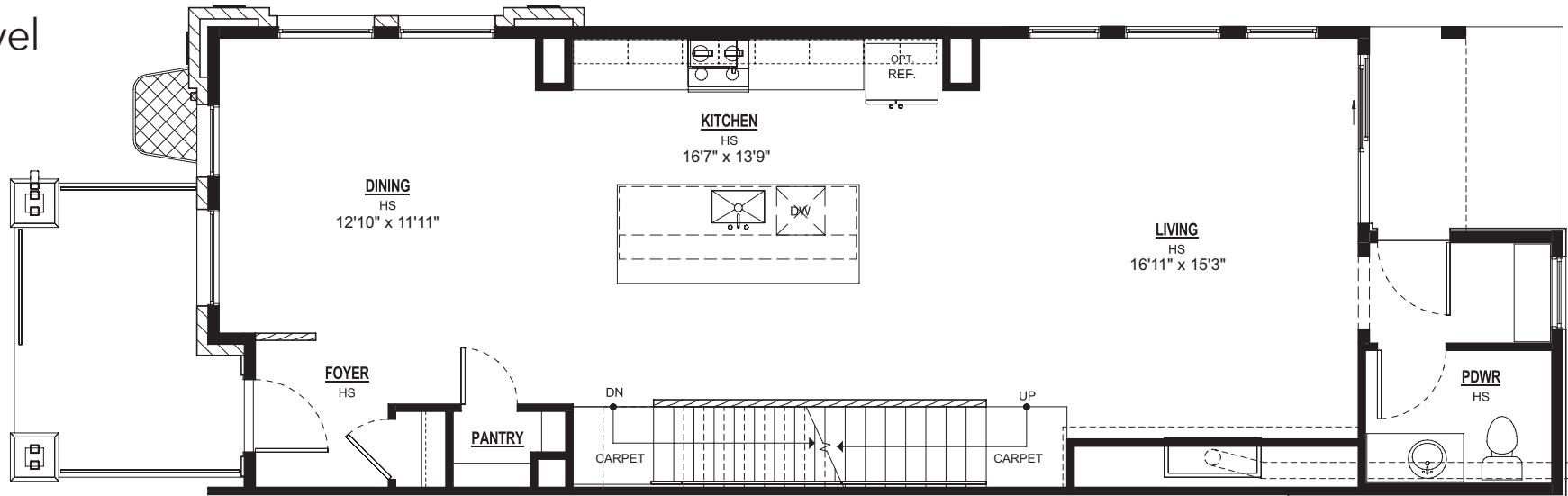
extra bedroom suites by modifying the third floor loft and the basement - and still have space for a rec room. A private outdoor living area separates the main house from a detached two-car garage that's accessible via the alley.

Plan C: 2,388 Total Square Feet + 738 Square Feet in Optional Finished Basement



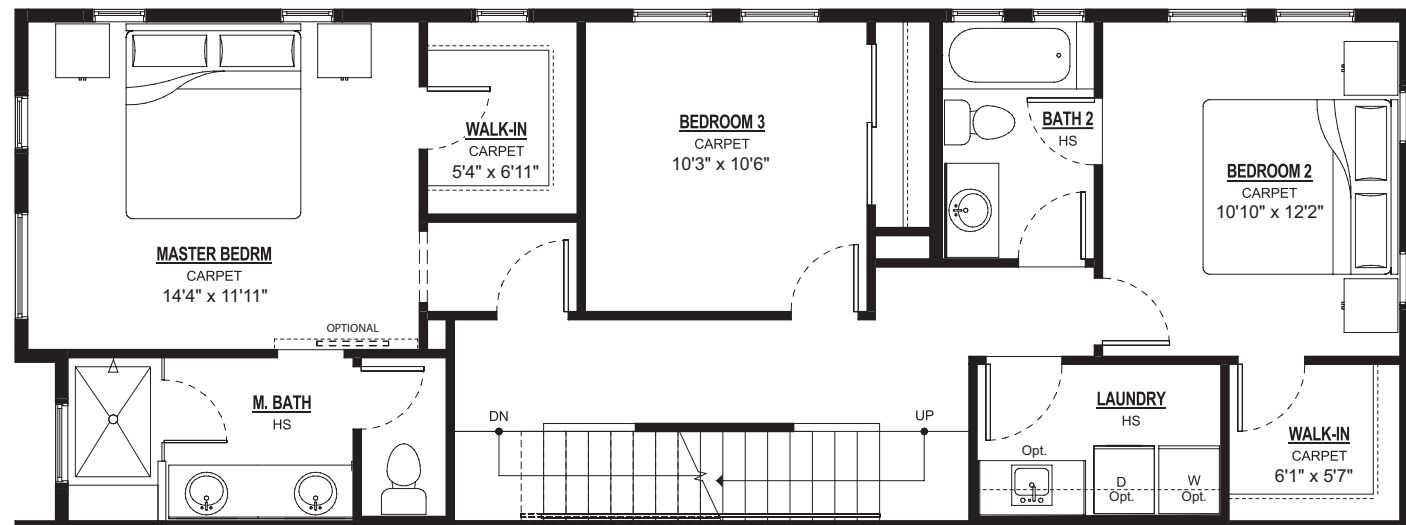
Main Level 1015 SF

Large windows fill the main-level kitchen, dining room and living area with natural light. There's a conveniently located powder room on this level too.



Second Level 1,004 SF

The second level features three bedrooms, walk-in closets for generous storage, two full baths and a separate laundry room.

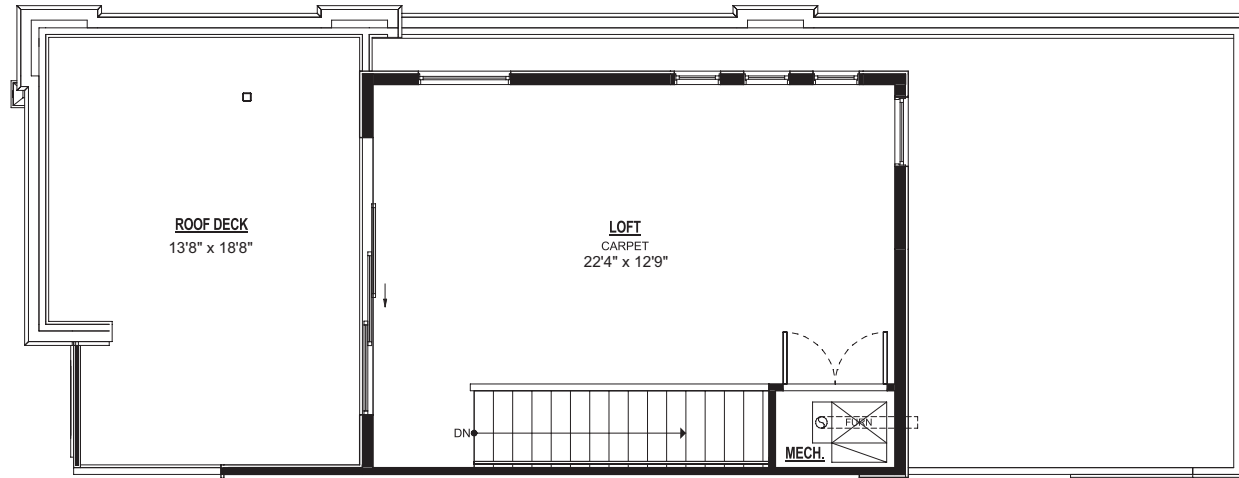


Plan C: 2,388 Total Square Feet + 738 Square Feet in Optional Finished Basement



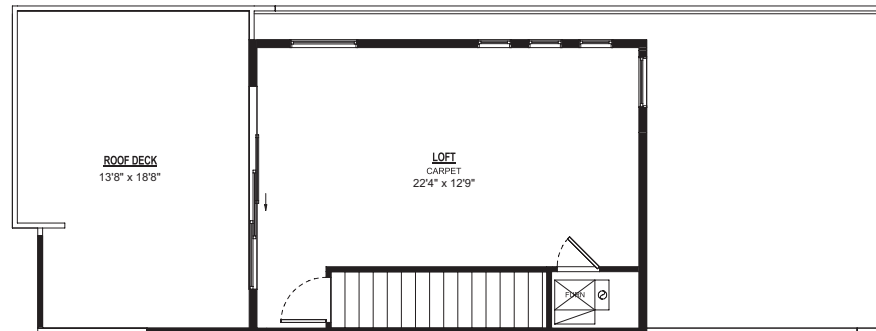
Third Level 369 SF

On the third level, an open loft or an extra bedroom suite steps out onto a treetop deck overlooking the neighborhood.



Third Level Option 1 369 SF

Enclosed Stairwell

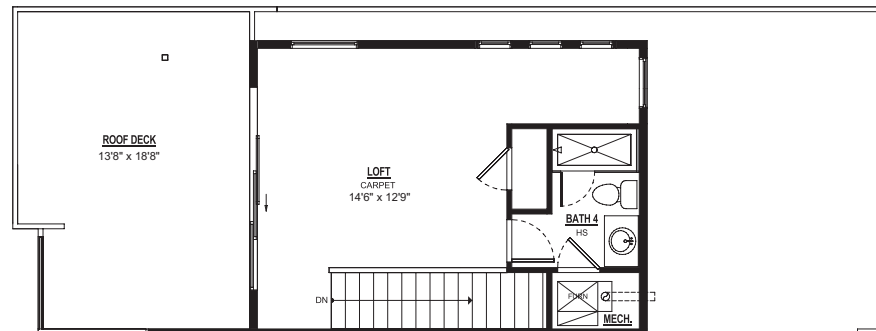


Reduced size; not to scale

Third Level Option 2 369 SF

Loft with Bath and Closet

For bedroom suite, select Options 1 and 2



Reduced size; not to scale

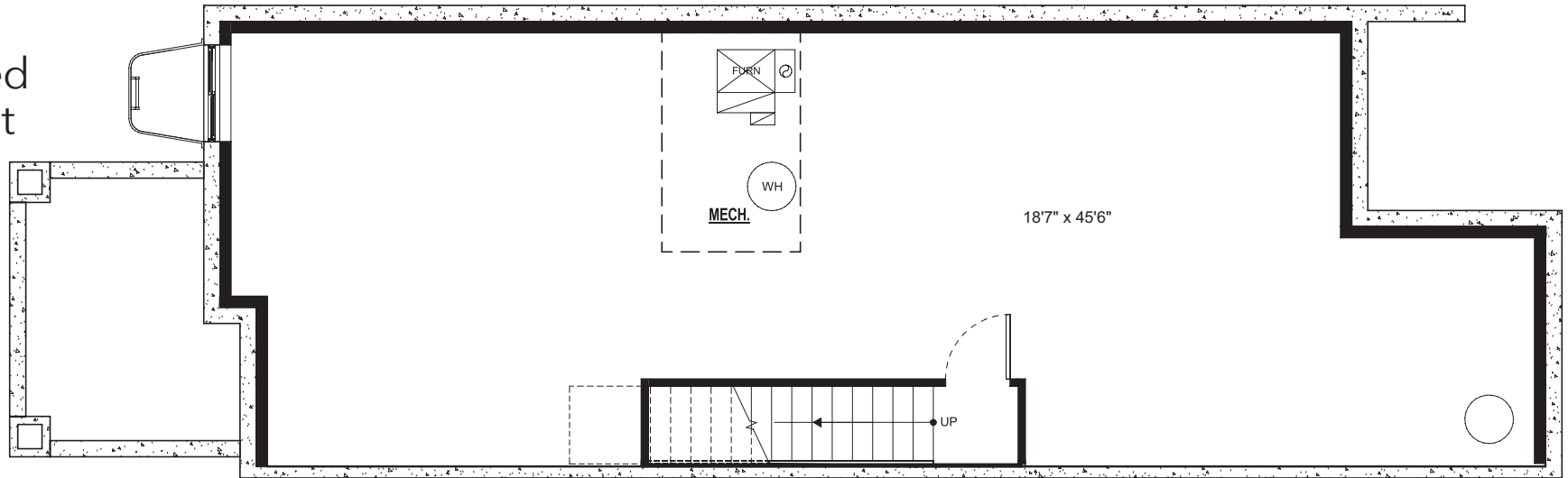
KUH Vine Street, LLC reserves the right to modify plans, exterior designs and specifications and may substitute materials and brands of like quality at any time without prior notice. Square footages and room dimensions provided are approximate. Effective 7.2018

Plan C: 2,388 Total Square Feet + 738 Square Feet in Optional Finished Basement



Standard Unfinished Basement 927 SF

The unfinished basement can be configured as a family rec room, with space for an additional bedroom suite (see below).



Finished Basement Option 738 SF

