

sloansedge
Southshore Townhomes

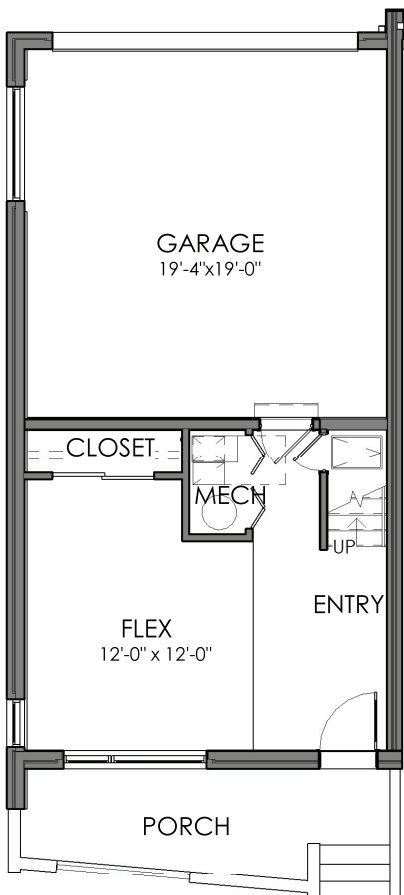
sloansedge
Southshore Townhomes

Floor Plans

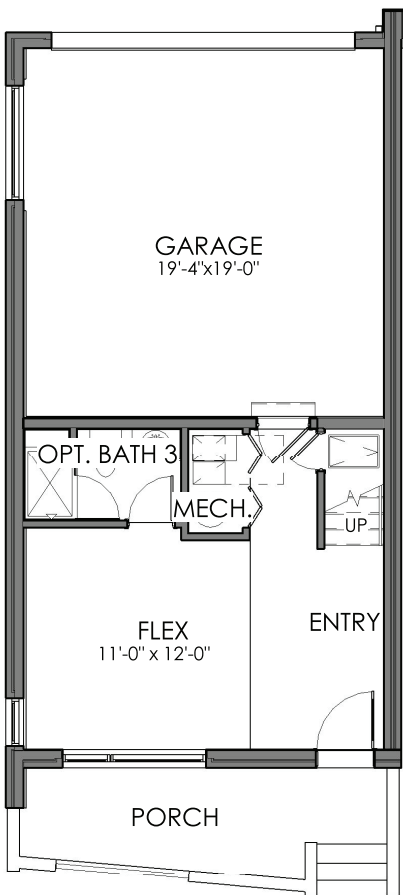


Floor Plans

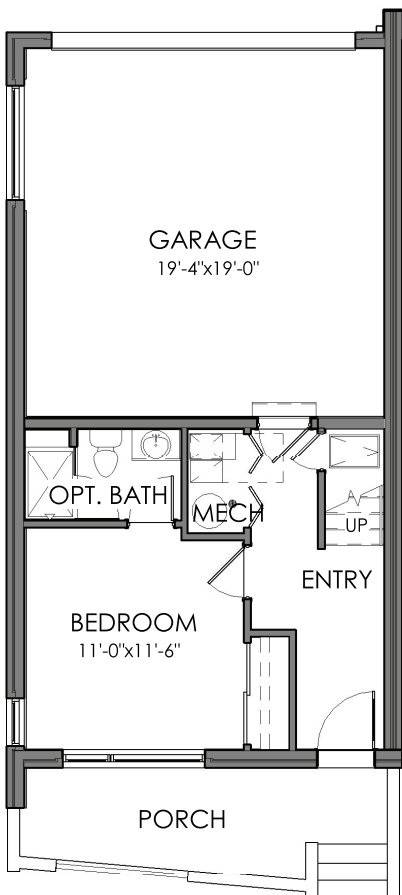
Unit D 2,070 Total Square Feet



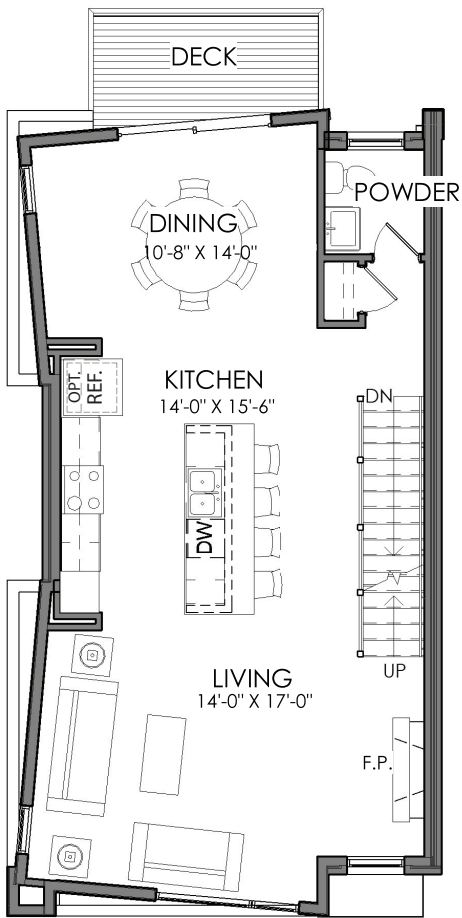
Level 1
Standard
368 Square Feet



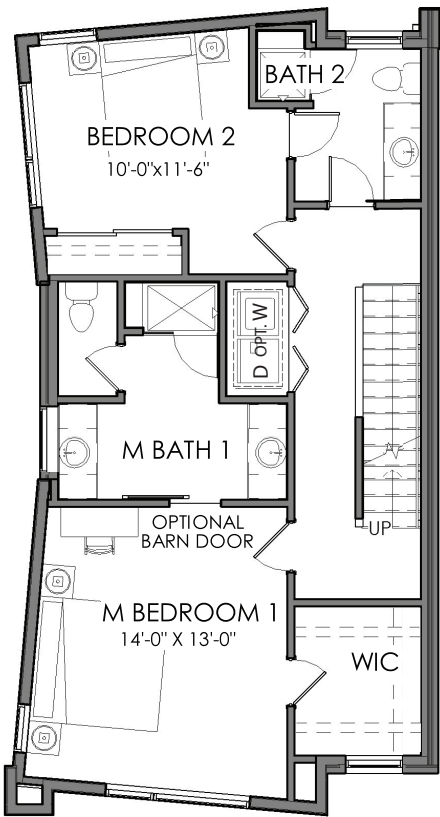
Level 1
Optional Bath
368 Square Feet



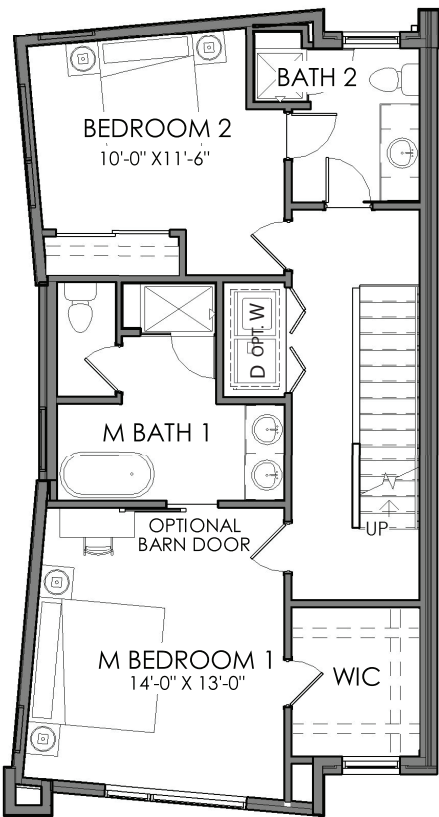
Level 1
Optional Bed and Bath
368 Square Feet



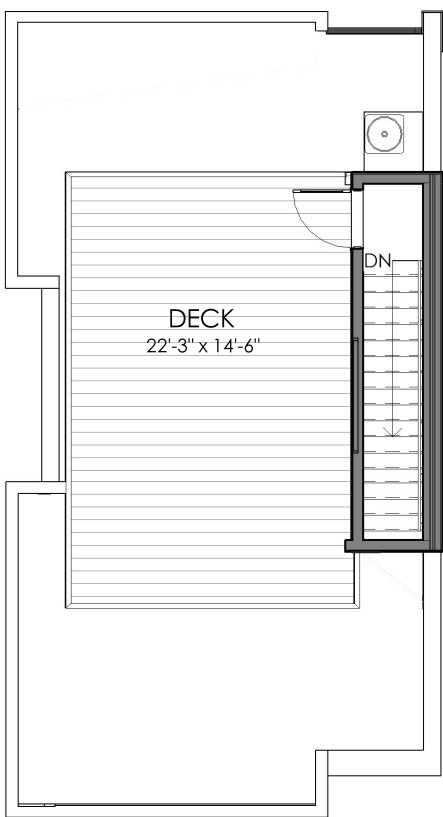
Level 2
851 Square Feet



Level 3
Standard
851 Square Feet



Level 3
Optional 5 Piece Bath
851 Square Feet



Level 4