



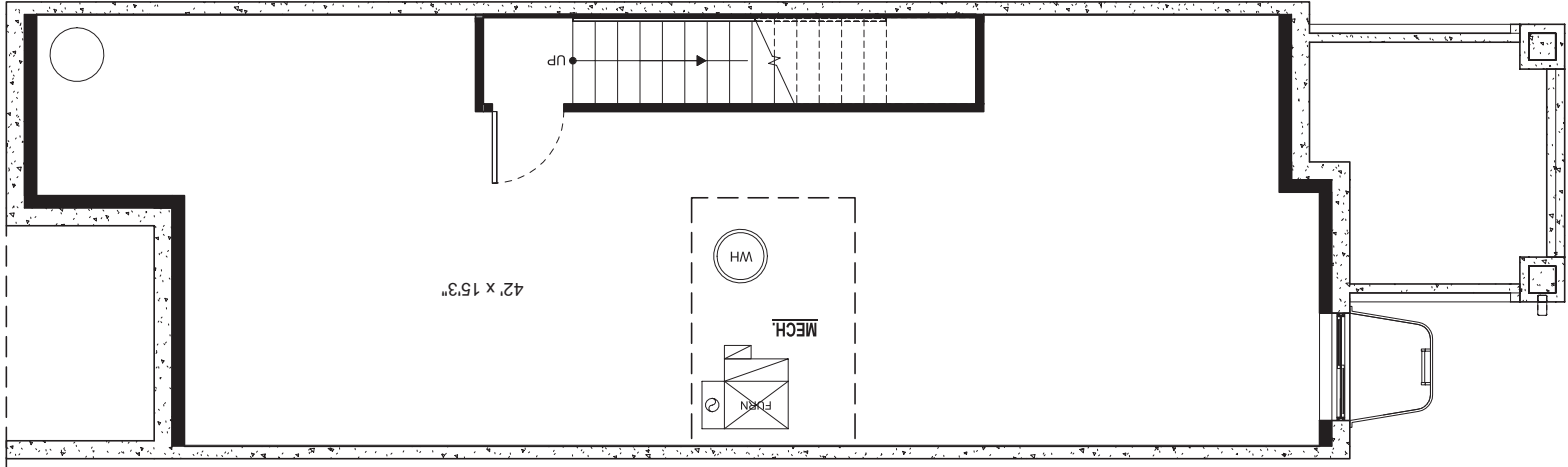
# Plan A

These four smart-sized rowhomes are sprinkled throughout Vine. Each home starts with two bedrooms and two and half baths. The third-floor loft and/or basement can be configured into additional bedroom suites.

Like all Vine homes, these span four floors, including a walk-out treetop deck. Private outdoor space links the house with an oversized one-car detached garage fed by the back alley.

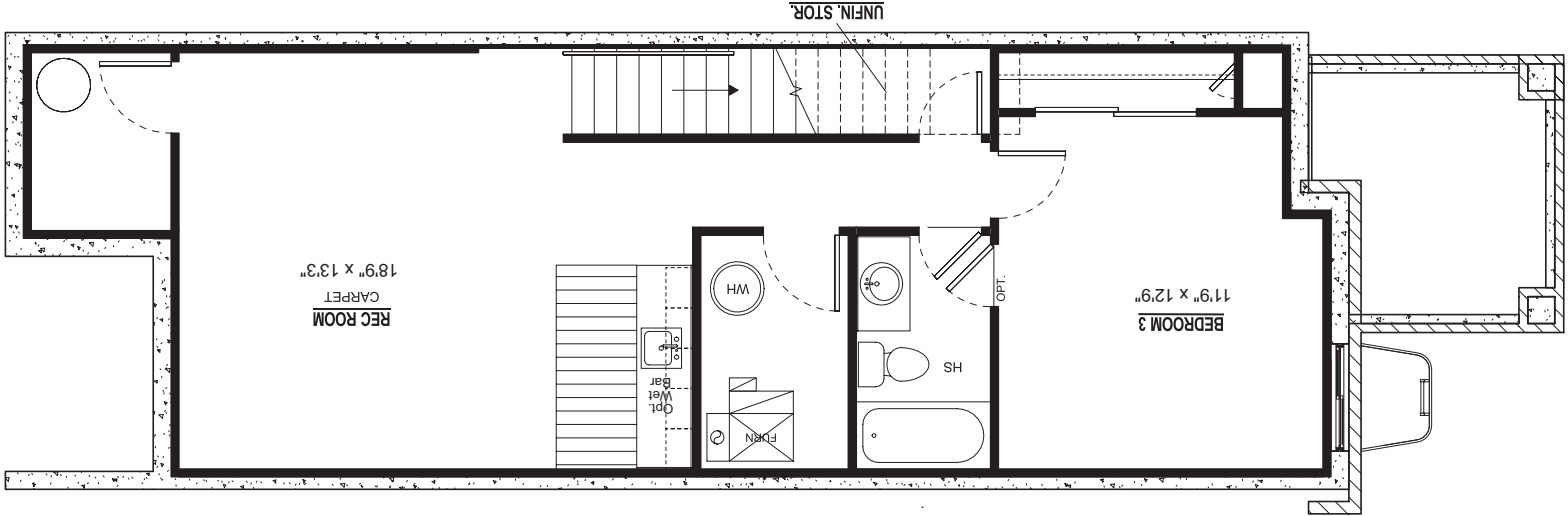


## Plan A: 1,993 Total Square Feet + 610 Square Feet in Optional Finished Basement



Look to the unfinished basement for a family room, with space for an additional bedroom suite (see below).

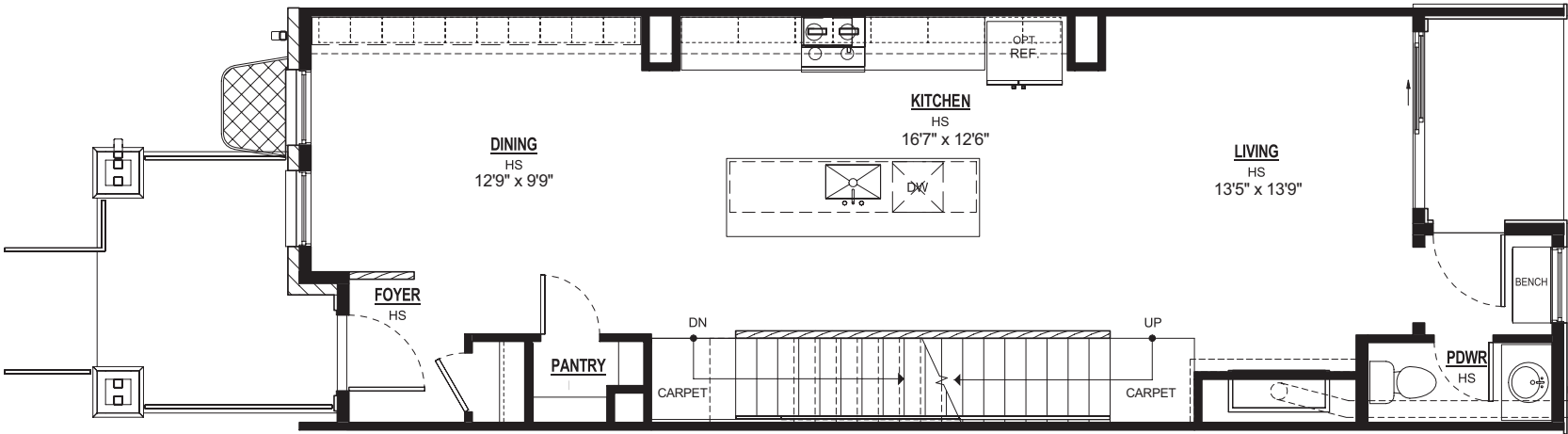
### Standard Unfinished Basement 725 SF



### Finished Basement 610 SF

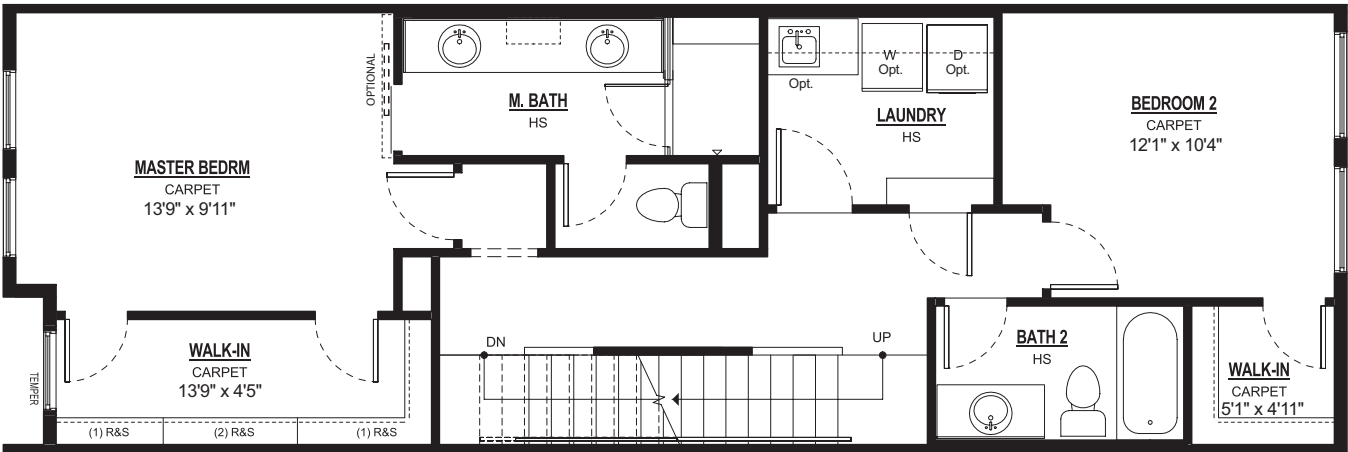
Main Level  
793 SF

The main level centers around an impressive kitchen with a signature island, and free-flowing living and dining areas. A convenient powder room is just off the living space.



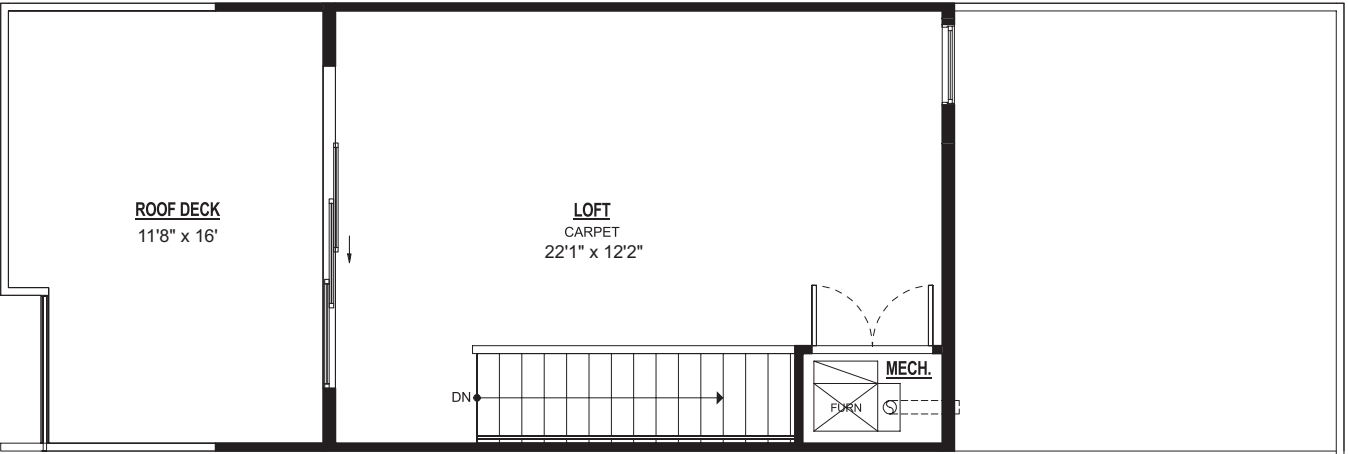
Second Level  
840 SF

Two bedrooms with roomy walk-in closets, each with a full bath, are on the second floor, along with a centrally located laundry room.



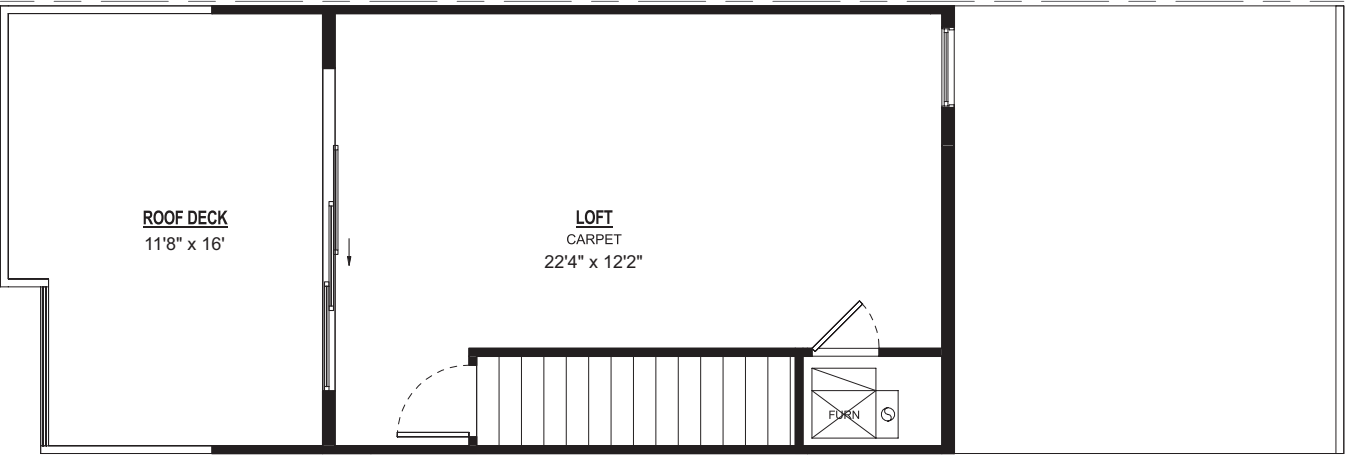
Third Level  
360 SF

Step up to the top floor and into a loft, which can be constructed as a bedroom suite. The space opens onto a private treetop deck for entertaining, daydreaming or sipping a latte.



Third Level Option 1  
360 SF

Enclosed Stairwell



Third Level Option 2  
360 SF

Loft with Bath and Closet

For bedroom suite, select Options 1 and 2

